



Flat 23 Ayley Croft , Enfield, EN1 1XT

£1,850 Per Month



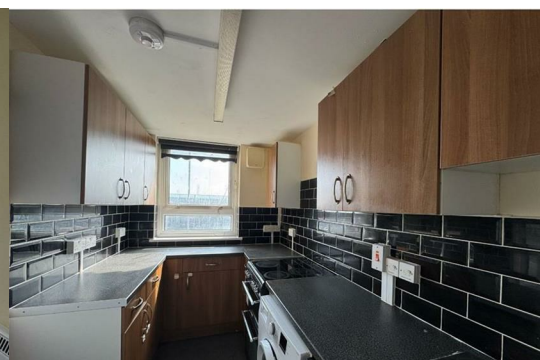
Discover this charming 2-bedroom, 1-bathroom flat located in the quiet, residential area of Ayley Croft, EN1 1XT. Perfectly suited for couples, small families, or professionals, the property boasts a spacious reception room ideal for relaxing or entertaining.

The flat is well-maintained with neutral décor, a modern fitted kitchen, and ample natural light throughout.

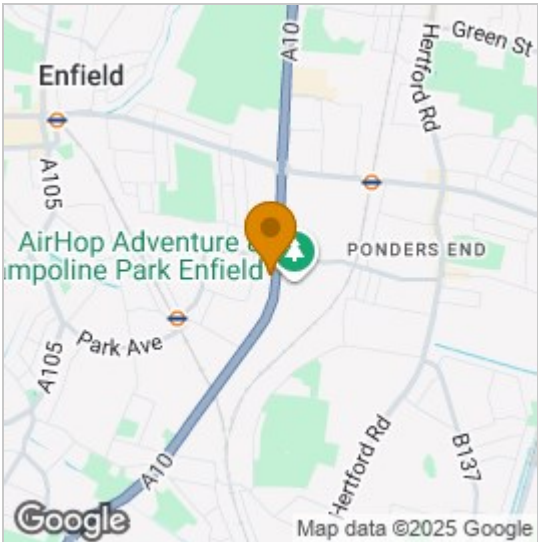
Situated in a peaceful area with convenient parking, it's just a short walk to local shops, cafes, and supermarkets. Enfield Town Centre and Retail Park are nearby, offering a wide range of shopping and dining options.

Excellent transport links include Enfield Town and Southbury Stations, providing quick access to Central London.

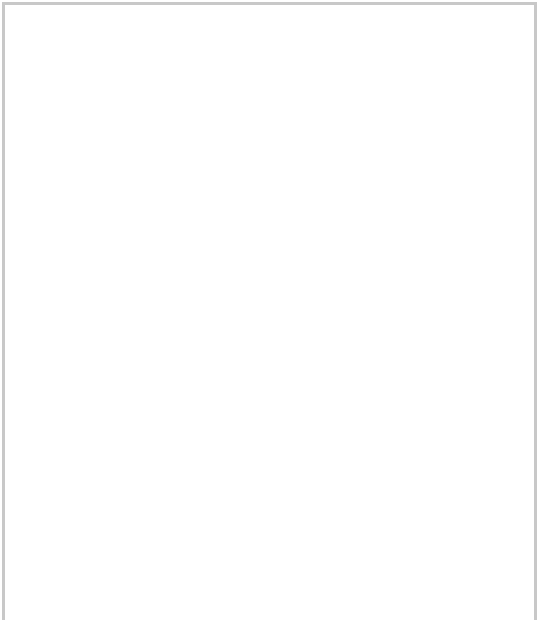
Families will appreciate proximity to good schools and green spaces like Bush Hill Park. Don't miss the opportunity to rent this comfortable, well-located home!



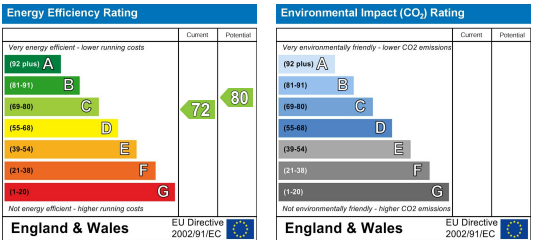
Area Map



Floor Plans



Energy Efficiency Graph



These particulars, whilst believed to be accurate are set out as a general outline only for guidance and do not constitute any part of an offer or contract. Intending purchasers should not rely on them as statements of representation of fact, but must satisfy themselves by inspection or otherwise as to their accuracy. No person in this firms employment has the authority to make or give any representation or warranty in respect of the property.